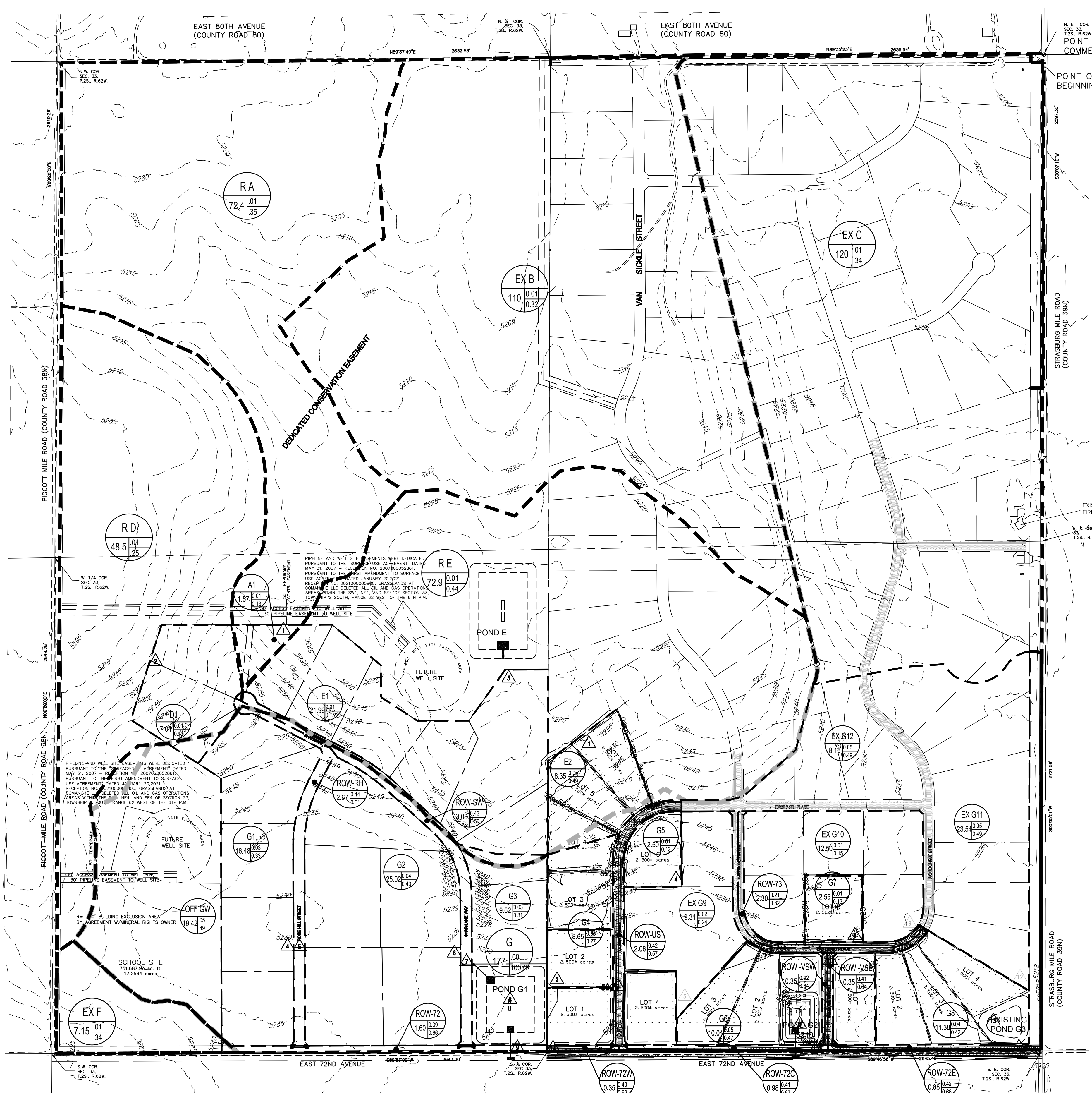


T:\0320_02_00-GRASSLANDS-FILING-588\DWG\CD\Drawing 6 - 0320.004\0320-004-01-WEIC-CDS-4.00.dwg, C:\02\DEV\DRNG_9112021 7:36:18 PM, AutoCAD PDF (General Documentation).p3, ARCH expand 4 (36.00 x 24.00 Inches), WEC 24'x36, WEC 24'x36



DEVELOPED DRAINAGE LEGEND

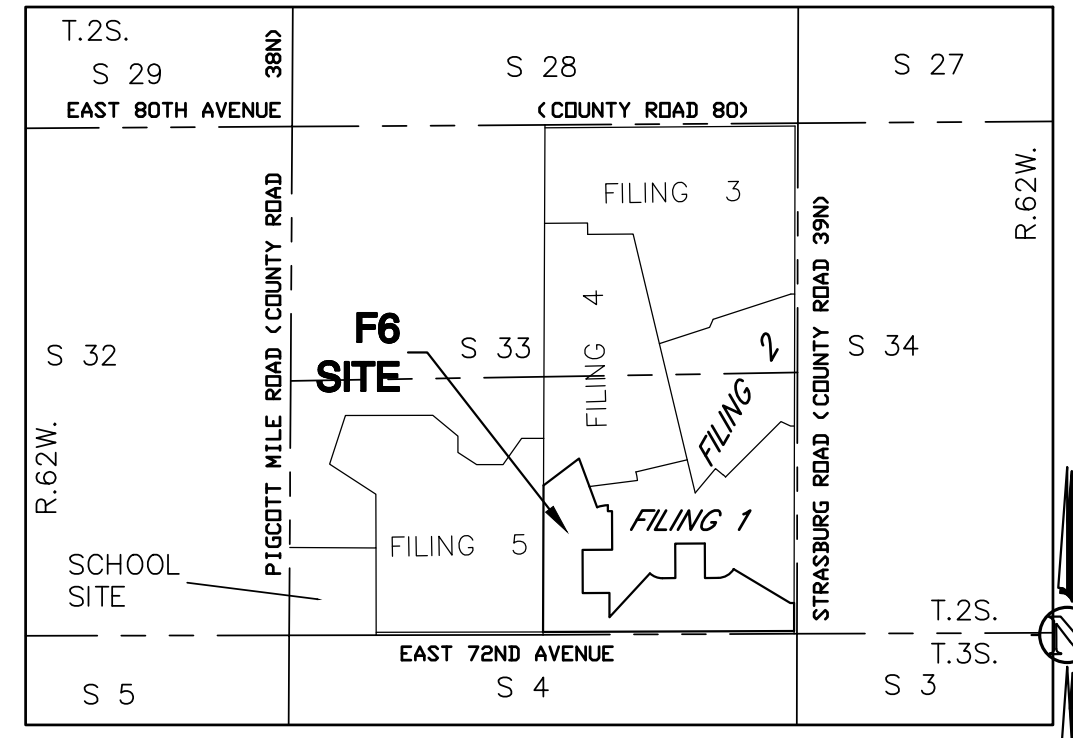
B1 SUB-BASIN DESIGNATION
 $3.20 \cdot 58$ C5
 1.88 C100
 AREA IN ACRES

--- DEVELOPED BASIN
 → PROPOSED DRAINAGE PATTERN
 △ DESIGN POINT

L_i - INITIAL LENGTH
S_i - INITIAL SLOPE
L_t - TRAVEL LENGTH
S_t - TRAVEL SLOPE

$L_i = L_t$
 $S_i = S_t$
 $L_i = L_t$
 $S_i = S_t$

"R" REMAINING AREA FROM ORIGINAL EXISTING BASINS (i.e. "RA", "RD", etc.)



VICINITY MAP
 SE 1/4 SECTION 33 TOWNSHIP 2 SOUTH RANGE 62 WEST
 SHOWN VICINITY MAP TAKEN FROM USGS QUAD MAP - CO_Roper_School_20160901_TM_geo

Developed Runoff Table - Grasslands at Comanche Filing No. 6							
BASIN	Impervious	C-YR	I	A	(C/(YR-DEVELOPED)) cfs	DESIGN POINT	
E4							
C ₂ (MHFD 2018)	2.00	0.01	1.71	6.35	0.11 cfs		1
C ₅	2.00	0.05	2.27	6.35	0.72 cfs		
C ₁₀	2.00	0.15	2.81	6.35	2.67 cfs		
C ₁₀₀	2.00	0.49	5.14	6.35	15.99 cfs		
G4							
C ₂ (MHFD 2018)	2.00	0.01	1.86	8.65	0.16 cfs		2
C ₅	2.00	0.05	2.47	8.65	1.07 cfs		
C ₁₀	2.00	0.15	3.05	8.65	3.96 cfs		
C ₁₀₀	2.00	0.49	5.59	8.65	23.68 cfs		
G5							
C ₂ (MHFD 2018)	2.00	0.01	2.52	2.50	0.06 cfs		4
C ₅	2.00	0.05	3.36	2.50	0.42 cfs		
C ₁₀	2.00	0.15	4.15	2.50	1.56 cfs		
C ₁₀₀	2.00	0.49	7.60	2.50	9.31 cfs		
G6							
C ₂ (MHFD 2018)	2.00	0.01	1.83	10.04	0.18 cfs		6
C ₅	2.00	0.05	2.43	10.04	1.22 cfs		
C ₁₀	2.00	0.15	3.00	10.04	4.52 cfs		
C ₁₀₀	2.00	0.49	5.50	10.04	27.05 cfs		
G7							
C ₂ (MHFD 2018)	2.00	0.01	3.03	2.55	0.08 cfs		8
C ₅	2.00	0.05	4.04	2.55	0.51 cfs		
C ₁₀	2.00	0.15	4.99	2.55	1.90 cfs		
C ₁₀₀	2.00	0.49	9.12	2.55	11.38 cfs		
G8							
C ₂ (MHFD 2018)	2.00	0.01	1.29	11.38	0.15 cfs		12
C ₅	2.00	0.05	1.71	11.38	0.97 cfs		
C ₁₀	2.00	0.15	2.12	11.38	3.61 cfs		
C ₁₀₀	2.00	0.49	3.87	11.38	21.59 cfs		
ROW-US							
C ₂ (MHFD 2018)	49.83	0.40	1.31	2.06	1.09 cfs		3
C ₅	49.83	0.44	1.74	2.06	1.58 cfs		
C ₁₀	49.83	0.50	2.15	2.06	2.22 cfs		
C ₁₀₀	49.83	0.69	3.93	2.06	5.55 cfs		
ROW-SW							
C ₂ (MHFD 2018)	35.31	0.28	1.52	1.48	0.64 cfs		7
C ₅	35.31	0.32	2.03	1.48	0.97 cfs		
C ₁₀	35.31	0.39	2.51	1.48	1.47 cfs		
C ₁₀₀	35.31	0.63	4.59	1.48	4.26 cfs		
ROW-VSE							
C ₂ (MHFD 2018)	34.65	0.28	1.23	1.51	0.52 cfs		10
C ₅	34.65	0.32	1.63	1.51	0.78 cfs		
C ₁₀	34.65	0.39	2.02	1.51	1.19 cfs		
C ₁₀₀	34.65	0.62	3.69	1.51	3.47 cfs		
FUT G9							
C ₂ (MHFD 2018)	2.00	0.01	1.29	9.31	0.12 cfs		5
C ₅	2.00	0.05	1.71	9.31	0.80 cfs		
C ₁₀	2.00	0.15	2.12	9.31	2.95 cfs		
C ₁₀₀	2.00	0.49	3.87	9.31	17.66 cfs		
FUT G10							
C ₂ (MHFD 2018)	2.00	0.01	1.09	12.50	0.14 cfs		9
C ₅	2.00	0.05	1.45	12.50	0.90 cfs		
C ₁₀	2.00	0.15	1.79	12.50	3.35 cfs		
C ₁₀₀	2.00	0.49	3.27	12.50	20.05 cfs		
FUT G11							
C ₂ (MHFD 2018)	2.00	0.01	1.29	32.76	0.42 cfs		11
C ₅	2.00	0.05	1.71	32.76	2.81 cfs		
C ₁₀	2.00	0.15	2.12	32.76	10.40 cfs		
C ₁₀₀	2.00	0.49	3.87	32.76	62.14 cfs		

127 S. DENVER AVE
 FT. LUTON, CO 80621
 www.westernci.com
 email@westernci.com
 (720) 885-8951
 FAX (720) 294-1330
Western Engineering Consultants, Inc LLC

DATE: 09/20/21 CFC
 REVISION:
 BY:
 CHECKED BY:
 DATE: 09/20/21 CFC
 REVISION:
 BY:
 CHECKED BY:
GRASSLANDS AT COMANCHE LLC
 CONTACT: JARRON ASHIDA
 1035 57th AVENUE CT
 GREELEY, CO 80643
 MOBILE (970)415-0228

**DEVELOPED DRAINAGE PLAN
 GRASSLANDS AT COMANCHE
 FILING 6**
 ADAMS COUNTY, COLORADO

Dig Safely.
 CALL UNCC
 THREE WORKING DAYS
 BEFORE YOU DIG
 1-800-922-1987
 www.uncc.org
 UTILITY NOTIFICATION
 CENTER OF COLORADO

ONLY VALID FOR CONSTRUCTION
 IF SEAL & ORIGINAL SIGNATURE
 ARE ON EACH SHEET

INITIAL PLAN
 RELEASE: 09/22/21
 DESIGNED BY: CFC
 DRAWN BY: CFC
 CHECKED BY: CFC

PROJECT NO.
 01-0320.004.01
 DOC CON #
 4.02-DEV-DRNG

SHT C4.02

